



SEHATYRE
BUSINESS UNIT OF SEHA

**product
catalogue**



özka

SEHA[®]

brand tyres

made in Türkiye



KNK 20



KNK 126



KNK 24



KNK 25



KNK 28



KNK 50



KNK 30



KNK 35



KNK 32



KNK 140



KNK 52



KNK 25



KNK 26



KNK 27



KNK 28



KNK 48



IND 80



KNK 44



KNK 65



KNK 12



KNK 10



KNK 70



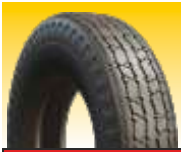
KNK 72



KNK 77



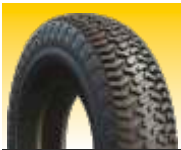
KNK 40



KNK 20



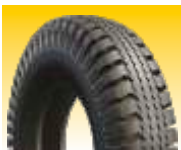
TECHNICAL DATA								
Tyre Size	Ply Rating	Recommended Rim Size	Inflated Dimensions		Load Capacity		Inflation Pressure (lb / in ²)	Load/Speed Index
			Section Width (mm)	Outer Diameter (mm)	2 Wheeled Maximum load per axle (kg)	4 Wheeled Maximum load per axle (kg)		
6.50-14C	8 PR	5.0J,5.0K,5.0JK	171	647	1300	2460	67	93/91L
7.50-15C	12 PR	6.0 G, 5.50F, 6.50H	210	775	2640	5000	94	114/112L
6.50-16C	10 PR	4.50 E SDC 41/2J, 41/2K	176	748	2000	3900	73	108/107L
7.00-16C	10 PR	5.50F SDC	198	778	2300	4480	76	113/112L
7.50-16C	12 PR	6.0, B6.0, 6.0S, 6.00T	210	806	2900	5000	94	121/121J



KNK 126



TECHNICAL DATA								
Tyre Size	Ply Rating	Recommended Rim Size	Inflated Dimensions		Load Capacity		Inflation Pressure (lb / in ²)	Load/Speed Index
			Section Width (mm)	Outer Diameter (mm)	2 Wheeled Maximum load per axle (kg)	4 Wheeled Maximum load per axle (kg)		
6.50-16C	10 PR	4.50 E SDC 41/2J, 41/2K	176	748	2000	3900	73	108/107L
7.00-16C	10 PR	5.50F SDC	198	778	2300	4480	76	113/112L
7.50-16C	12 PR	6.0, B6.0, 6.0S, 6.00T	210	806	2900	5000	94	121/121J



KNK 24



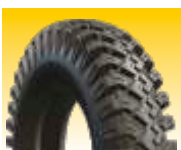
TECHNICAL DATA								
Tyre Size	Ply Rating	Recommended Rim Size	Inflated Dimensions		Load Capacity		Inflation Pressure (lb / in ²)	Load/Speed Index
			Section Width (mm)	Outer Diameter (mm)	2 Wheeled Maximum load per axle (kg)	4 Wheeled Maximum load per axle (kg)		
7.50-16C	12 PR	6.0, B6.0, 6.0S, 6.00T	210	806	2900	5000	94	121/121J



KNK 25



TECHNICAL DATA								
Tyre Size	Ply Rating	Recommended Rim Size	Inflated Dimensions		Load Capacity		Inflation Pressure (lb / in ²)	Load/Speed Index
			Section Width (mm)	Outer Diameter (mm)	2 Wheeled Maximum load per axle (kg)	4 Wheeled Maximum load per axle (kg)		
7.50-16C	12 PR	6.0, B6.0, 6.0S, 6.00T	210	806	2900	5000	94	121/121J



KNK 28



TECHNICAL DATA								
Tyre Size	Ply Rating	Recommended Rim Size	Inflated Dimensions		Load Capacity		Inflation Pressure (lb / in ²)	Load/Speed Index
			Section Width (mm)	Outer Diameter (mm)	2 Wheeled Maximum load per axle (kg)	4 Wheeled Maximum load per axle (kg)		
7.50-16C	12 PR	6.0, B6.0, 6.0S, 6.00T	210	806	2900	5000	94	121/121J



TECHNICAL DATA							
Tyre Size	Ply Rating	Recommended Rim Size	Inflated Dimensions		Load Capacity (kg)	Inflation Pressure (lb / in ²)	Load/Speed Index
			Section Width (mm)	Outer Diameter (mm)			
6.00-16	6 PR	4.00 E	165	735	487	40	83 A6
6.00-16	8 PR	4.00 E	165	735	610	48	88 A6
6.50-16	6 PR	4.50 E	175	760	615	45	91 A6
6.50-16	8 PR	4.50 E	175	770	730	54	97 A6
7.50-15	8 PR	5.50 F	205	790	825	54	101 A6
7.50-16	8 PR	5.50 F	206	808	875	47	99 A6
280/70-16	8 PR	W9	278	805	1120	36	112 A6
7.50-18	8 PR	5.50 F	203	855	950	54	106 A6
280/70-18	8 PR	W9	282	849	1180	35	114 A8
7.50-20	8 PR	5.50 F	206	914	875	47	103 A6
9.5/20 TL-TT	8 PR	W8	232	940	975	40	107 A6
11.2/20 TL-TT	8PR	W10	286	994	1150	37	113 A6
8.3/24	8 PR	W7	210	1009	1000	35	108 A6
9.5-24	8 PR	W8	236	1062	1120	40	112 A6
11.2/24	8 PR	W10	284	1118	1250	35	116 A6
11.2/24	12 PR	W10	284	1118	1465	35	116 A6
12.4/24	8 PR	W11	315	1168	1400	33	120 A6
12.4/24	12 PR	W11	315	1168	1800	35	128 A6
13.6/24	8 PR	W12	345	1190	1550	25	123 A6
13.6/24	12 PR	W12	345	1190	2000	44	132 A6
14.9/24	8 PR	W12, W11	378	1265	1760	26	128 A6
14.9/24	10 PR	W12, W11	378	1265	1990	32	132 A6
14.9/24	14 PR	W13	378	1265	2300	38	137 A6
14.9/26	10 PR	W11, W12, W13	378	1317	2060	30	133 A6
14.9/26	14 PR	W11, W12, W13	378	1317	2500	39	140 A6
18.4/26	10 PR	W15L, W16L	467	1450	2650	26	142 A6
18.4/26	14 PR	W16L	467	1461	3000	33	146 A6
23.1/26 TL	18 PR	DW20 B	590	1650	4910	35	162 A6
11.2/28	8 PR	W10	284	1205	1320	35	118 A6
12.4/28	8 PR	W11	315	1260	1550	33	123 A6
13.6/28	8 PR	W12	368	1321	1650	29	125 A6
14.9/28	8 PR	W13	378	1365	1900	26	130 A6
16.9/28	10 PR	W15L	429	1435	2430	29	139 A6
16.9/28	14 PR	W15L	429	1435	2900	39	145 A6
14.9/30	8 PR	W13	378	1415	1950	26	131 A6
14.9/30	10 PR	W13	378	1415	2180	33	135 A6
16.9/30	10 PR	W15L	429	1485	2430	30	139 A6
16.9/30	14 PR	W15L	429	1485	2800	38	144 A6
18.4/30	10 PR	W16L	467	1550	2900	26	145 A6
18.4/30	14 PR	W16L	467	1550	3450	38	151 A6
23.1/30 TL	18 PR	DW20 B	592	1710	5190	35	160 A6
8.3/32	8 PR	W7	211	1190	875	35	103 A6
9.5/32	8 PR	W8	241	1251	1060	30	110 A6
12.4/32	8 PR	W11	315	1360	1600	33	124 A6
16.9/34	10 PR	W15L	429	1585	2650	29	142 A6
16.9/34	14 PR	W15L	429	1585	3150	41	149 A6
18.4/34	10 PR	W16L	467	1650	3000	26	146 A6
18.4/34	14 PR	W16L	467	1650	3650	36	153 A6
12.4/36	6 PR	W11	315	1450	1615	25	121 A6
12.4/36	8 PR	W11	315	1465	1700	33	126 A6
13.6/36	6 PR	W12	345	1515	1650	23	125 A6
13.6/36	8 PR	W12	345	1515	1850	29	129 A6
12.4/38	8 PR	W11	290	1514	1800	32	128 A6
13.6/38	8 PR	W12	345	1565	1950	29	131 A6
13.6/38	10 PR	W12	345	1565	2180	33	135 A6
14.0/38	8 PR	W12, DW12	350	1570	1950	29	131 A6
14.0/38	10 PR	W12, DW12	350	1570	2240	33	136 A6
15.5/38	10 PR	W14L	394	1570	2360	33	138 A6
16.9/38	10 PR	W15L	429	1685	2800	29	144 A6
16.9/38	14 PR	W15L	429	1685	3550	38	149 A6
18.4/38	10 PR	W16L	467	1750	3075	26	147 A6
18.4/38	14 PR	W16L	467	1750	3750	36	155 A6
20.8/38 TL-TT	16 PR	W16L	546	1855	4750	39	162 A6

Front / Rear Tractor



KNK 50



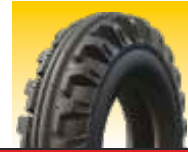
Special design for farm tractor as rear tyre and also as front tyre and as front tyre for combined harvesters.

Tread pattern provides very good tracking on the field and also self-cleaning ability.

The thick lug with special compound provides improved tyre mileage and uniform wear.



KNK 30



TECHNICAL DATA							
Tyre Size	Ply Rating	Recommended Rim Size	Inflated Dimensions		Load Capacity (kg)	Inflation Pressure (lb / in ²)	Load/Speed Index
			Section Width (mm)	Outer Diameter (mm)			
6.00-16	6 PR	4.50 E	165	735	560	48	88 A6
6.00-16	8 PR	4.50 E	165	735	610	64	94 A6
6.50-16	6 PR	4.50 E	176	763	615	45	91 A6
6.50-16	8 PR	4.50 E	177	762	730	48	97 A6
7.50-16	6 PR	5.50 F	203	800	750	40	98 A6
7.50-16	8 PR	5.50 F	204	802	875	54	103 A6



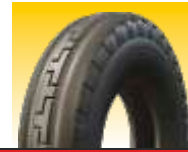
KNK 35



TECHNICAL DATA							
Tyre Size	Ply Rating	Recommended Rim Size	Inflated Dimensions		Load Capacity (kg)	Inflation Pressure (lb / in ²)	Load/Speed Index
			Section Width (mm)	Outer Diameter (mm)			
5.50-16	6 PR	4.00 E	150	710	530	54	86 A6
6.00-16	6 PR	4.50 E	165	732	560	48	88 A6
6.00-16	8 PR	4.50 E	165	735	610	64	94 A6
6.50-16	6 PR	4.50 E	176	763	615	45	91 A6
6.50-16	8 PR	4.50 E	177	762	730	48	97 A6
7.50-16	6 PR	5.50 F	203	800	750	40	98 A6
7.50-16	8 PR	5.50 F	205	808	875	54	103 A6
9.00-16	8 PR	W8	230	858	1090	45	111 A6
7.50-18	8 PR	5.50 F	205	860	950	54	106 A6
10.00-16	8 PR	W8	274	895	1360	41	114 A6



KNK 32



TECHNICAL DATA							
Tyre Size	Ply Rating	Recommended Rim Size	Inflated Dimensions		Load Capacity (kg)	Inflation Pressure (lb / in ²)	Load/Speed Index
			Section Width (mm)	Outer Diameter (mm)			
7.50-16	6 PR	5.50 F	203	800	750	40	98 A6
7.50-16	8 PR	5.50 F	205	808	875	54	103 A6
7.50-18	8 PR	5.50 F	205	860	950	54	106 A6
6.50-20	8 PR	5.00 F	175	865	1000	54	108 A6
7.50-20	8 PR	5.50 F	206	918	1000	49	108 A6



KNK 140

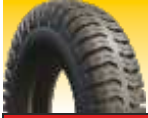


TECHNICAL DATA							
Tyre Size	Ply Rating	Recommended Rim Size	Inflated Dimensions		Load Capacity (kg)	Inflation Pressure (lb / in ²)	Load/Speed Index
			Section Width (mm)	Outer Diameter (mm)			
4.50-10	4 PR	3.00 D	124	490	300	30	66 A6
5.00-12	4 PR	3.50 D	152	578	265	32	62 A6
6.50/80-12	6 PR	5J	163	597	450	52	80 A6
6.50/80-13	6 PR	5.00 J	163	595	475	52	82 A6
5.00-15	6 PR	3.50D	147	655	387	51	75 A6



KNK 52

TECHNICAL DATA							
Tyre Size	Ply Rating	Recommended Rim Size	Inflated Dimensions		Load Capacity (kg)	Inflation Pressure (lb / in ²)	Load/Speed Index
			Section Width (mm)	Outer Diameter (mm)			
7.00-12	6 PR	4.25	196	670	487	36	83 A6
10.0/80-12	6 PR	9.00	260	730	750	33	98 A6
6.50/80-15	6 PR	5.00 F	171	658	710	52	98 A6
10.0/75-15.3 TL-TT	12 PR	9	264	760	1700	68	126 A8
11.5/80-15.3 TL-TT	14 PR	9.00	305	868	2430	69	139 A8
12.5/80-15.3 TL-TT	14 PR	9.00	307	889	2650	63	142 A8



KNK 25

TECHNICAL DATA							
Tyre Size	Ply Rating	Recommended Rim Size	Inflated Dimensions		Load Capacity (kg)	Inflation Pressure (lb / in ²)	Load/Speed Index
			Section Width (mm)	Outer Diameter (mm)			
7.50-16	12 PR	5.50 F	214	787	1450	73	121 A6
8.25-20	14 PR	6.00 F	229	934	2060	90	133 A6



KNK 26

TECHNICAL DATA							
Tyre Size	Ply Rating	Recommended Rim Size	Inflated Dimensions		Load Capacity (kg)	Inflation Pressure (lb / in ²)	Load/Speed Index
			Section Width (mm)	Outer Diameter (mm)			
9.00-16	12 PR	6.00 F	247	865	1650	58	125 A6
9.00-16	14 PR	6.00 F	247	865	1800	67	128 A6



KNK 27

TECHNICAL DATA							
Tyre Size	Ply Rating	Recommended Rim Size	Inflated Dimensions		Load Capacity (kg)	Inflation Pressure (lb / in ²)	Load/Speed Index
			Section Width (mm)	Outer Diameter (mm)			
9.00-16	12 PR	6.00 F	247	865	1650	58	125 A6
9.00-16	14 PR	6.00 F	247	865	1800	67	128 A6



KNK 28

TECHNICAL DATA							
Tyre Size	Ply Rating	Recommended Rim Size	Inflated Dimensions		Load Capacity (kg)	Inflation Pressure (lb / in ²)	Load/Speed Index
			Section Width (mm)	Outer Diameter (mm)			
7.50-16	12 PR	5.50 F	214	787	1450	73	121 A6

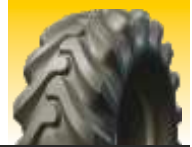


KNK 48

TECHNICAL DATA							
Tyre Size	Ply Rating	Recommended Rim Size	Inflated Dimensions		Load Capacity (kg)	Inflation Pressure (lb / in ²)	Load/Speed Index
			Section Width (mm)	Outer Diameter (mm)			
10.0/75-15.3 TL-TT	12 PR	9	264	760	1700	68	126 A8
11.5/80-15.3 TL-TT	14 PR	9.00	305	868	2430	69	139 A8
12.5/80-15.3 TL-TT	14 PR	9.00	307	889	2650	63	142 A8
4.00/60-15.5 TL	14 PR	AG 13.00	404	874	2900	52	145 A8
10.5/65-16	12 PR	W9	288	774	1700	65	126 A8
10.5/80-18	12 PR	W9	274	885	2300	60	137 A8
12.5/80-18	14 PR	W9	308	965	3000	63	146 A8
13.0/65-18	16 PR	W11	336	890	2800	71	144 A8



IND 80



TECHNICAL DATA							
Tyre Size	Ply Rating	Recommended Rim Size	Inflated Dimensions		Load Capacity (kg)	Inflation Pressure (lb / in ²)	Load/Speed Index
			Section Width (mm)	Outer Diameter (mm)			
10-16.5 TL-TT	12 PR	8.25	282	775	2360	84	138 A8
12-16.5 TL-TT	14 PR	9.75	320	846	3150	90	148 A8
10.5/80-18 TL	12 PR	W9	274	907	2120	54	134 A8
12.5/80-18 TL-TT	14 PR	9.0	308	987	2120	62	134 B
16.0/70-20 TL-TT	16 PR	13 SDC	385	1091	5300	65	166 A2
15.5/80-24 TL	16 PR	W12, W13	412	1269	3075	58	147 A8
16.0/70-24 TL-TT	16 PR	13 DC	418	1200	5800	65	169 A2
16.9/24 TL	14 PR	13 DC	429	1310	3550	42	152 A8
17.5L24 TL	14 PR	W15L	475	1277	3750	46	154 A8
15.5-25 TL	14 PR	12.00/13 I	400	1285	6500	69	171 A2
18.4/26 TL-TT	14 PR	W15L	467	1425	4250	42	158 A8
16.9/28 TL-TT	14 PR	W15	429	1410	4000	43	156 A8
16.9/30 TL	14 PR	W15L, W14	440	1470	4000	45	153 A8



KNK 44



TECHNICAL DATA								
Tyre Size	Ply Rating	Recommended Rim Size	Inflated Dimensions		Load Capacity		Inflation Pressure (lb / in ²)	Load/Speed Index
			Section Width (mm)	Outer Diameter (mm)	Single Axe Usage (kg)	Double Axe Usage (kg)		
10.00-20 TL-TT	16 PR	7.50	270	1060	3000	2725	109	146/143 B



KNK 65



TECHNICAL DATA							
Tyre Size	Ply Rating	Recommended Rim Size	Inflated Dimensions		Load Capacity (kg)	Inflation Pressure (lb / in ²)	Load/Speed Index
			Section Width (mm)	Outer Diameter (mm)			
10-16.5 TL-TT	12 PR	8.25	282	775	2360	84	138 A8
12-16.5 TL-TT	14 PR	9.75	320	846	3150	90	148 A8

KNK12



TECHNICAL DATA							
Tyre Size	Ply Rating	Recommended Rim Size	Inflated Dimensions		Load Capacity (kg)	Inflation Pressure (lb / in ²)	Load/Speed Index
			Section Width (mm)	Outer Diameter (mm)			
12.5-20	12 PR	11	325	1040	2000	51	132 F



KNK 10



TECHNICAL DATA								
Tyre Size	Ply Rating	Recommended Rim Size	Inflated Dimensions		Load Capacity		Inflation Pressure (lb / in ²)	Load/Speed Index
			Section Width (mm)	Outer Diameter (mm)	2 Wheeled Maximum load per axle (kg)	4 Wheeled Maximum load per axle (kg)		
14.00-20	18 PR	10.0, 10.00V, 10.00W	375	1260	9000	17000	100	160/157 F
14.00-20	20 PR	10.0, 10.00V, 10.00W	375	1260	9000	17000	108	161/158 F



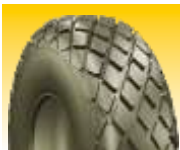
KNK 70

TECHNICAL DATA							
Tyre Size	Ply Rating	Recommended Rim Size	Inflated Dimensions		Load Capacity (kg)	Inflation Pressure (lb / in ²)	Load/Speed Index
			Section Width (mm)	Outer Diameter (mm)			
14.00-24 TL	24 PR	10.00 VA	375	1360	4500	83	160 D
14.00-24 TL	32 PR	10.00 VA	375	1360	6000	105	170 D
17.5-25 TL	16 PR	14.00/1.5	445	1348	7300	69	177 A2
17.5-25 TL	20 PR	14.00/1.5	445	1348	8250	83	181 A2
18.00-25 TL	40 PR	13.00/2.5	498	1615	17000	138	206 A2
20.5-25 TL	24 PR	17.00/1.7	520	1492	10300	76	189 A2
23.5-25 TL	24 PR	19.50/2.5	597	1617	12500	69	196 A2
26.5-25 TL	28 PR	22.00/3.0	673	1750	15500	69	203 A2
29.5-25 TL	32 PR	25.00/3.5	758	1923	19000	68	210 A2



KNK 72

TECHNICAL DATA							
Tyre Size	Ply Rating	Recommended Rim Size	Inflated Dimensions		Load Capacity (kg)	Inflation Pressure (lb / in ²)	Load/Speed Index
			Section Width (mm)	Outer Diameter (mm)			
13.00-24 TT-TL	16 PR	8.00 TG	341	1305	3450	58	151 A8
14.00-24 TT-TL	16 PR	8.00 TG	362	1348	3650	54	153 A8



KNK 77

TECHNICAL DATA							
Tyre Size	Ply Rating	Recommended Rim Size	Inflated Dimensions		Load Capacity (kg)	Inflation Pressure (lb / in ²)	Load/Speed Index
			Section Width (mm)	Outer Diameter (mm)			
23.1/26 TL	14 PR	DW20	587	1580	5300	33	166 A8



KNK 40

TECHNICAL DATA							
Tyre Size	Ply Rating	Recommended Rim Size	Inflated Dimensions		Load Capacity (kg)	Inflation Pressure (lb / in ²)	Load/Speed Index
			Section Width (mm)	Outer Diameter (mm)			
6.00-9	12 PR	4.00E	160	540	1450	145	121 A5
6.50-10	12 PR	5.00F	177	588	1650	131	125 A5
7.00-12	14 PR	5.00S	192	672	2120	131	134 A5
8.15-15 (29X8-15)	14 PR	7.00	216	707	3000	145	146 A5
8.25-15	18 PR	7.00	240	840	3650	145	153 A5



High performans tread



HP 20



HP 22



HP 25



HP 60



HP 61



HP 60-325



HP 60-380



HP 12



HP 35



HP 36



HP 39



HP 42



HP D2



HP 729



HP 50



HP 52



HP 10



HP 38



HP 21



HP 40



HP 45



HP 46

Pattern of
pre-cured tread
for retreading

LIGHT TRUCK

Tyre Size	Ply Rating
KNK 20	
6.50-14C	8 PR
7.50-15C	12 PR
6.50-16C	10 PR
7.00-16C	10 PR
7.50-16C	12 PR
KNK 126	
6.50-16C	10 PR
7.00-16C	10 PR
7.50-16C	12 PR
KNK 24	
7.50-16C	12 PR
KNK 25	
7.50-16C	12 PR
KNK 28	
7.50-16C	12 PR

OTR

Tyre Size	Ply Rating
KNK 70	
14.00-24 TL	24 PR
14.00-24 TL	32 PR
17.5-25 TL	16 PR
17.5-25 TL	20 PR
18.00-25 TL	40 PR
20.5-25 TL	24 PR
23.5-25 TL	24 PR
26.5-25 TL	28 PR
29.5-25 TL	32 PR
KNK 72	
13.00-24 TT-TL	16 PR
14.00-24 TT-TL	16 PR
KNK 77	
23.1/26 TL	14 PR

FORKLIFT

Tyre Size	Ply Rating
KNK 40	
6.00-9	12 PR
6.50-10	12 PR
7.00-12	14 PR
8.15-15 (29X8-15)	14 PR
8.25-15	18 PR

MILITARY MPT

Tyre Size	Ply Rating
KNK 12	
12.5-20	12 PR
KNK 10	
14.00-20	18 PR
14.00-20	20 PR

FRONT / REAR TRACTOR

Tyre Size	Ply Rating
KNK 50	
6.00-16	6 PR
6.00-16	8 PR
6.50-16	6 PR
6.50-16	8 PR
7.50-15	8 PR
7.50-16	8 PR
280/70-16	8 PR
7.50-18	8 PR
280/70-18	8 PR
7.50-20	8 PR
9.5/20 TL-TT	8 PR
11.2/20 TL-TT	8PR
8.3/24	8 PR
9.5-24	8 PR
11.2/24	8 PR
11.2/24	12 PR
12.4/24	8 PR
12.4/24	12 PR
13.6/24	8 PR
13.6/24	12 PR
14.9/24	8 PR
14.9/24	10 PR
14.9/24	14 PR
14.9/26	10 PR
14.9/26	14 PR
18.4/26	10 PR
18.4/26	14 PR
23.1/26 TL	18 PR
11.2/28	8 PR
12.4/28	8 PR
13.6/28	8 PR
14.9/28	8 PR
16.9/28	10 PR
16.9/28	14 PR
14.9/30	8 PR
14.9/30	10 PR
16.9/30	10 PR
16.9/30	14 PR
18.4/30	10 PR
18.4/30	14 PR
23.1/30 TL	18 PR
8.3/32	8 PR
9.5/32	8 PR
12.4/32	8 PR
16.9/34	10 PR
16.9/34	14 PR
18.4/34	10 PR
18.4/34	14 PR
12.4/36	6 PR
12.4/36	8 PR
13.6/36	6 PR
13.6/36	8 PR
12.4/38	8 PR
13.6/38	8 PR
13.6/38	10 PR
14.0/38	8 PR
14.0/38	10 PR
15.5/38	10 PR
16.9/38	10 PR
16.9/38	14 PR
18.4/38	10 PR
18.4/38	14 PR
20.8/38 TL-TT	16 PR

FRONT / REAR TRACTOR

Tyre Size	Ply Rating
KNK 30	
6.00-16	6 PR
6.00-16	8 PR
6.50-16	6 PR
6.50-16	8 PR
7.50-16	6 PR
7.50-16	8 PR
KNK 35	
5.50-16	6 PR
6.00-16	6 PR
6.00-16	8 PR
6.50-16	6 PR
6.50-16	8 PR
7.50-16	6 PR
7.50-16	8 PR
9.00-16	8 PR
7.50-18	8 PR
10.00-16	8 PR
KNK 32	
7.50-16	6 PR
7.50-16	8 PR
7.50-18	8 PR
6.50-20	8 PR
7.50-20	8 PR
KNK 140	
4.50-10	4 PR
5.00-12	4 PR
6.50/80-12	6 PR
6.50/80-13	6 PR
5.00-15	6 PR

INDUSTRIAL

Tyre Size	Ply Rating
IND 80	
10-16.5 TL-TT	12 PR
12-16.5 TL-TT	14 PR
10.5/80-18 TL	12 PR
12.5/80-18 TL-TT	14 PR
16.0/70-20 TL-TT	16 PR
15.5/80-24 TL	16 PR
16.0/70-24 TL-TT	16 PR
16.9/24 TL	14 PR
17.5L24 TL	14 PR
15.5-25 TL	14 PR
18.4/26 TL-TT	14 PR
16.9/28 TL-TT	14 PR
16.9/30 TL	14 PR
KNK 44	
10.00-20 TL-TT	16 PR
KNK 65	
10-16.5 TL-TT	12 PR
12-16.5 TL-TT	14 PR

IMPLEMENT

Tyre Size	Ply Rating
KNK 52	
7.00-12	6 PR
10.0/80-12	6 PR
6.50/80-15	6 PR
10.0/75-15.3 TL-TT	12 PR
11.5/80-15.3 TL-TT	14 PR
12.5/80-15.3 TL-TT	14 PR
KNK 25	
7.50-16	12 PR
8.25-20	14 PR
KNK 26	
9.00-16	12 PR
9.00-16	14 PR
KNK 27	
9.00-16	12 PR
9.00-16	14 PR
KNK 28	
7.50-16	12 PR
KNK 48	
10.0/75-15.3 TL-TT	12 PR
11.5/80-15.3 TL-TT	14 PR
12.5/80-15.3 TL-TT	14 PR
4.00/60-15.5 TL	14 PR
10.5/65-16	12 PR
10.5/80-18	12 PR
12.5/80-18	14 PR
13.0/65-18	16 PR

Product Catalogue

SEHATYRE
BUSINESS UNIT OF SEHA

**“Best price,
prompt delivery,
quality service”**



**Seha Mühendislik Müşavirlik
Tic. Ve Makina San. Ltd. Şti.**

Ayten Sk. No: 27 Mebusevleri
06580 Ankara - TÜRKİYE

Tel: +90 312 215 75 00 (Pbx)

Fax: +90 312 223 49 78

+90 312 215 75 15

fpolat@seha.com.tr

tyre@seha.com.tr

tire@seha.com.tr

info@seha.com.tr

www.sehatyre.com

www.seha.com.tr